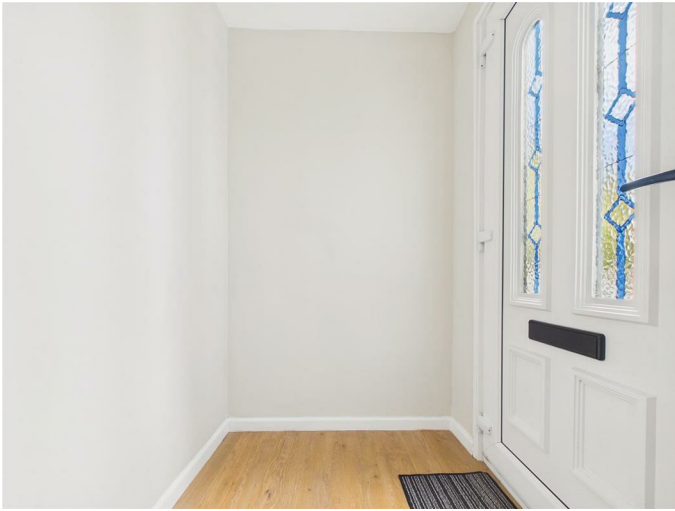


6 Bramhope Green, Gateshead, NE9 7DW

£120,000

Located in the charming area of Bramhope Green, this immaculately presented mid-terraced house offers a delightful living experience. With spacious accommodation throughout, this property is perfect for families or those seeking a comfortable home. Upon entering, you are welcomed by an inviting entrance porch that leads into a well-proportioned lounge, complete with a stylish wall-mounted fire, creating a warm and cosy atmosphere. The internal hallway features display shelving and ample storage, adding to the practicality of the home. The dining kitchen is a true highlight, equipped with a free-standing cooker and an eye-level microwave, making it a joy for culinary enthusiasts. The patio doors seamlessly connect the kitchen to the rear paved patio, perfect for al fresco dining or enjoying a morning coffee. The first floor landing leads to the main bedroom, which boasts built-in wardrobes and two windows that provide a lovely view, ensuring a serene retreat. Additionally, there are two further bedrooms and a family bathroom, offering ample space for family or guests. The low-maintenance rear garden is a standout feature, featuring an Astro turf lawn, a decked sun terrace, and a paved patio area, ideal for relaxation and entertaining. This delightful home is not only beautifully presented but also offers a lovely outlook, making it a must-see. Viewings are highly recommended to fully appreciate the charm and comfort this property has to offer.

ENTRANCE PORCH



UTILITY ROOM

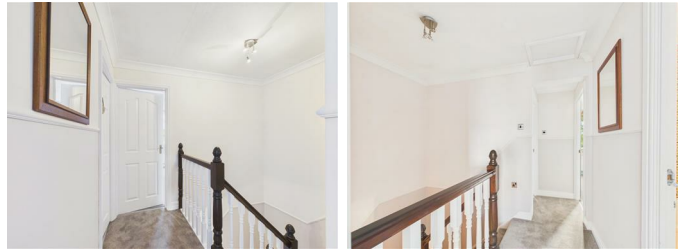


LOUNGE

14'11" x 10'3" (4.57m x 3.13m)



FIRST FLOOR LANDING



INTERNAL HALLWAY

11'9" x 6'0" (3.60m x 1.85m)



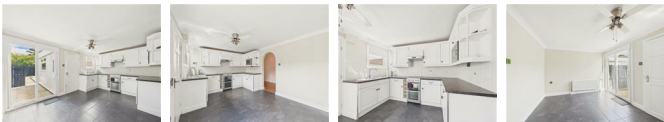
BEDROOM ONE

13'5" to robes x 10'2" (4.09m to robes x 3.12m)



DINING KITCHEN

14'11" x 10'2" (4.55m x 3.11m)



VIEW



BEDROOM TWO

10'2" x 7'8" (3.12m x 2.35m)



BEDROOM THREE

10'2" x 6'11" (3.12m x 2.12m)



BATHROOM

8'2" x 5'6" (2.51m x 1.68m)



EXTERNAL



REAR PAVED PATIO AREA



Property disclaimer

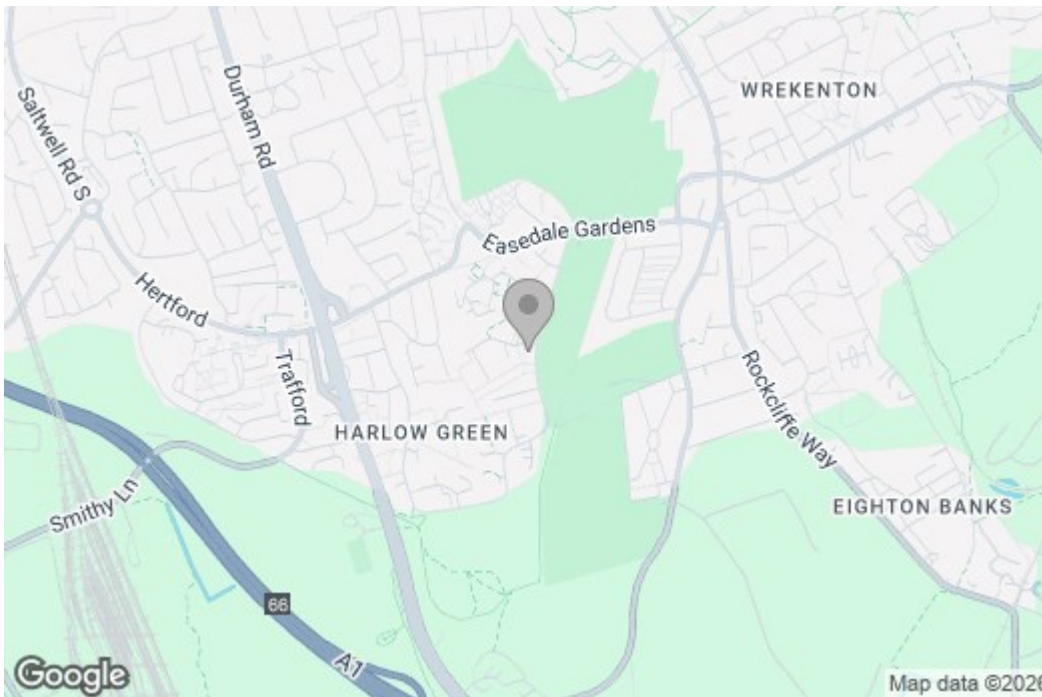
IMPORTANT NOTE TO PURCHASERS: We endeavour to

make our sales particulars accurate and reliable, however, they do not constitute or form part of an offer or any contract and none is to be relied upon as statements of representation or fact. The services, systems and appliances listed in this specification have not been tested by us and no guarantee as to their operating ability or efficiency is given. All measurements have been taken as a guide to prospective buyers only, and are not precise. Floor plans where included are not to scale and accuracy is not guaranteed. If you require clarification or further information on any points, please contact us, especially if you are travelling some distance to view. Fixtures and fittings other than those mentioned are to be agreed with the seller. We cannot also confirm at this stage of marketing the tenure of this house.

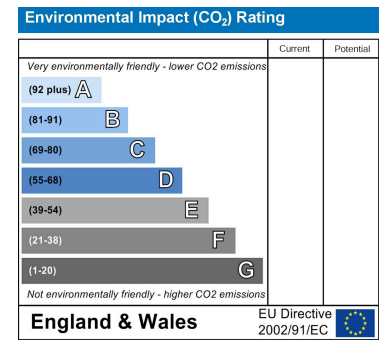
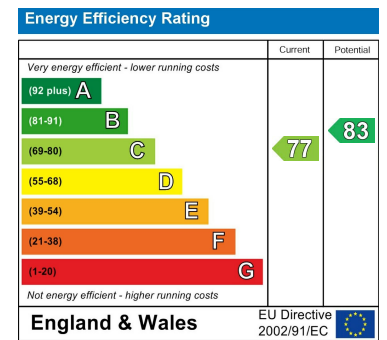
Floor Plan



Area Map



Energy Efficiency Graph



These particulars, whilst believed to be accurate are set out as a general outline only for guidance and do not constitute any part of an offer or contract, purchaser should not rely on them as statements of representation of fact, but must satisfy themselves by inspection or otherwise as to their accuracy. No person in this firm's employment has the authority to make or give an representation or warranty in respect of the property.